

Manifold



Product feature

1. It is available to integrate the direction control valves of the same series to form valve group to save space and cost;
2. It is easy to examine when there are faults owing to the unified air intake and exhaust and unified wiring;
3. Flexible combination and strong expansion capability can make any combination or expansion of the numbers of direction control valves that are connected.

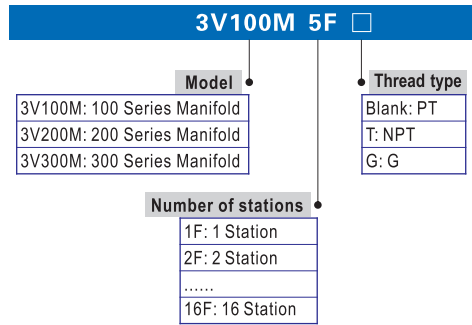
Specification

Item\Manifold Model	100M	200M	300M
Fluid	Air(to be filtered by 40 μ m filter element)		
Temperature °C	-20~70		
Adaptable valve's series	3A100 Series	3A200 Series	3A300 Series

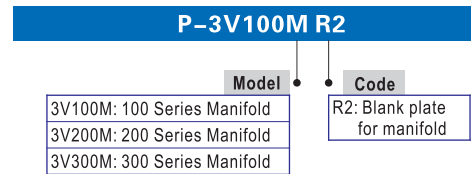
Ordering code

Ordering code contains the two parts of the manifold's and the blank plate's.

1 Ordering code for manifold



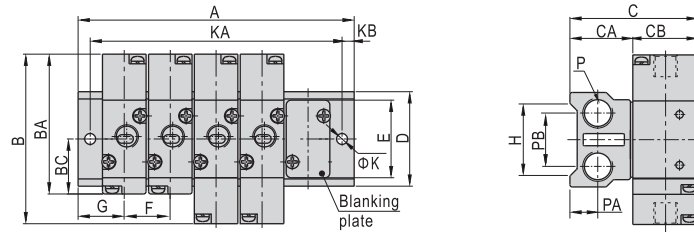
2 Ordering code for blank plate



- Remark: 1. Manifold kits contains manifold, seal and screw.
2. Blank plate kits contains blank plate, and screw.

Dimensions

With 3A air valve

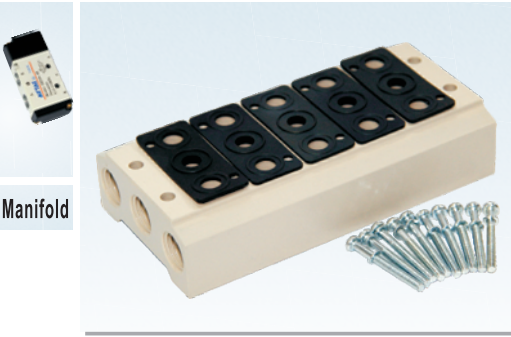


Model\Item	B	BA	BC	C	CA	CB	D	E	F	G	H	K	KB	P	PA	PB
3V100M	70	57.7	22.7	53	26	27	39	32	19	19	30	4.5	5	1/4"	11.5	22
3V200M	84	69.7	27.7	61	26	35	45	40	23	23	35	4.5	6	1/4"	11.5	25
3V300M	96	80.5	32.5	70	30	40	52	47	28	27	42	4.5	6	3/8"	13.5	28

Model\Item	A															
	1F	2F	3F	4F	5F	6F	7F	8F	9F	10F	11F	12F	13F	14F	15F	16F
3V100M	38	57	76	95	114	133	152	171	190	209	228	247	266	285	304	323
3V200M	46	69	92	115	138	161	184	207	230	253	276	299	322	345	368	391
3V300M	54	82	110	138	166	194	222	250	278	306	334	362	390	418	446	474

Model\Item	KA															
	1F	2F	3F	4F	5F	6F	7F	8F	9F	10F	11F	12F	13F	14F	15F	16F
3V100M	28	47	66	85	104	123	142	161	180	199	218	237	256	275	294	313
3V200M	34	57	80	103	126	149	172	195	218	241	264	287	310	333	356	379
3V300M	42	70	98	126	154	182	210	238	266	294	322	350	378	406	434	462

Manifold



Manifold

Specification

Item\Manifold Model	100M	200M	300M	400M
Fluid	Air(to be filtered by 40 μ m filter element)			
Temperature °C	-20~70			
Adaptable valve's series	4A100 Series	4A200 Series	4A300 Series	4A400 Series

Ordering code

Ordering code contains the two parts of the manifold's and the blank plate's.

1 Ordering code for manifold

100M 5F □

- Model**
 - 100M: 100 Series Manifold
 - 200M: 200 Series Manifold
 - 300M: 300 Series Manifold
 - 400M: 400 Series Manifold
- Thread type**
 - Blank: PT
 - T: NPT
 - G: G
- Number of stations**
 - 1F: 1 Station
 - 2F: 2 Station
 -
 - 16F: 16 Station

2 Ordering code for blank plate

P-100M R2

- Model**
 - 100M: 100 Series Manifold
 - 200M: 200 Series Manifold
 - 300M: 300 Series Manifold
 - 400M: 400 Series Manifold
- Code**
 - R2: Blank plate for manifold

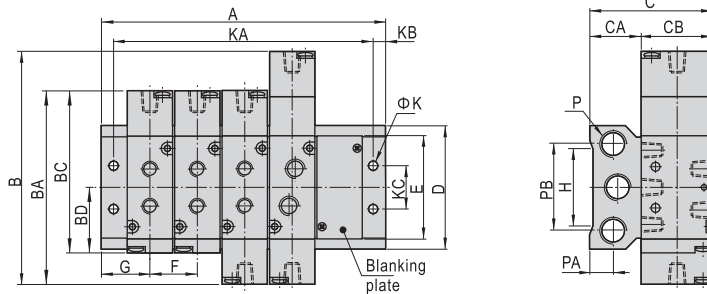
Product feature

1. It is available to integrate the direction control valves of the same series to form valve group to save space and cost;
2. It is easy to examine when there are faults owing to the unified air intake and exhaust and unified wiring;
3. Flexible combination and strong expansion capability can make any combination or expansion of the numbers of direction control valves that are connected.

① 100M, 200M series have a maximum of 16 stations ; 300M series have a maximum of 12 stations; 400M series have a maximum of 8 stations.

Dimension

With 4A air valve



Model\Item	B	BA	BC	BD	C	CA	CB	D	E	F	G	H	K	KB	KC	P	PA	PB
100M□F	96	81	68.7	28	53	26	27	58	43	19	19	36	4.5	5	20	1/4"	12.5	40
200M□F	111	92	77.7	31.7	62	27	35	61	51	23	23	38	4.5	6	21	1/4"	13	43
300M□F	130	111	95.5	40	71	31	40	75	65	28	27	54	4.5	6	26	3/8"	15	53
400M□F	163	142	128	57	89	39	50	104	94.5	35	31.5	75	5.5	7	32	1/2"	19	68

Model\Item	A															
	1F	2F	3F	4F	5F	6F	7F	8F	9F	10F	11F	12F	13F	14F	15F	16F
100M□F	38	57	76	95	114	133	152	171	190	209	228	247	266	285	304	323
200M□F	46	69	92	115	138	161	184	207	230	253	276	299	322	345	368	391
300M□F	54	82	110	138	166	194	222	250	278	306	334	362	-	-	-	-
400M□F	63	98	133	168	203	238	273	308	-	-	-	-	-	-	-	-

Model\Item	KA															
	1F	2F	3F	4F	5F	6F	7F	8F	9F	10F	11F	12F	13F	14F	15F	16F
100M□F	28	47	66	85	104	123	142	161	180	199	218	237	256	275	294	313
200M□F	34	57	80	103	126	149	172	195	218	241	264	287	310	333	356	379
300M□F	42	70	98	126	154	182	210	238	266	294	322	350	-	-	-	-
400M□F	49	84	119	154	189	224	259	294	-	-	-	-	-	-	-	-

